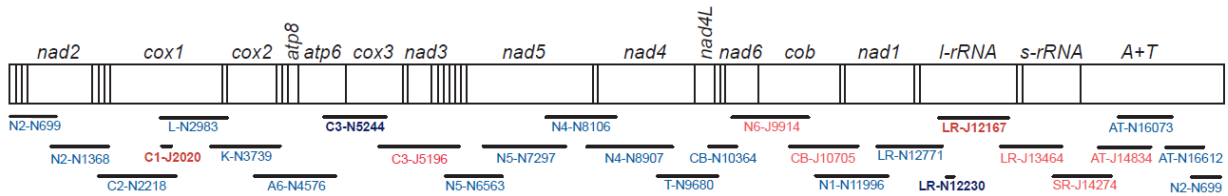


Appendix I. Primers used for sequencing of the mt genome of *V melania*. Red and blue colors refer to forward and reverse primers, respectively. Names in bold indicate the primers for long PCRs.



Primer	Nucleotide sequence 5' - 3'	Reference
N2-N699	ATAATCAGCCATCCTAAGTGGC	This study
N2-N1368	TCTTAAAGCTGTTCCAACATATGC	This study
C2-N2218	TCCTACTGTGAATATGTGGTGAGC	This study
C1-J2020	AATACHTCMTTCTTTGATCCWGCHGGDGGDGGDGACCC	Yamauchi <i>et al.</i> 2005
L-N2983	AGAGGACTCTTGAAAGTTCAGTTGTGC	This study
K-N3739	AGCCAACAACATATAGATTGACATTC	This study
A6-N4576	ACGGCAAATACGTATGACTG	This study
C3-N5244	GTCAATATCAWGCDCDGTCTCAAATCCWAAGTGGTG	Yamauchi <i>et al.</i> 2005
C3-J5196	ACTATCCTACAAGCATATGAGTATTGAG	This study
N5-N6563	AGGGCGTTTCCTATITGTCGTGAG	This study
N5-N7297	ACTCCTGTTTCTGCTCTAGTTCATTC	This study
N4-N8106	TCAGTTCTGGTTCTGTTCGTGAG	This study
N4-N8907	TTTATACTCTTTTCGCTTCTCTTC	This study
T-N9680	TCGTTCTCTGTTTGGGTTTACAAGAC	This study
CB-N10364	TGGGTAGGTCTACTAGAGCGTTGTTGGC	This study
N6-J9914	AGGWGTAACWGTRACMTGRGCMCACCACAGC	This study
CB-J10705	AGTTATCATTCTATTCCCTAGTGATAG	This study
N1-N11996	TAAGATTGGCTTTGATCTTAATGTC	This study
LR-N12771	AGTTACCTTAGGGATAACAGCGTAATCTTC	This study
N1-J12167	CCTGGCTTACGCCGGTCTGAACTCAGATCATG	Yamauchi <i>et al.</i> 2005
LR-N12230	CWTATCGAMGGGWGDGDTTGGCGACCTCGATGTTG	Yamauchi <i>et al.</i> 2005
LR-J13464	ATTATAGAAAAAATGGAGATTGGC	This study
SR-J14274	TGTCGATCACTGAACAGGCTC	This study
AT-J14834	AGTATTACAATTTTGAATCTAATAAATC	This study
AT-N16073	TATATAAGAGTTTATGTAGAGGTAATG	This study
AT-N16612	TTCATTGTCATGTAATTATGATTCTTAG	This study

Appendix II. Putative secondary structures for the 22 tRNA genes in *V. melania*'s

mitogenome. Black dots indicate mismatches of base pairs.

