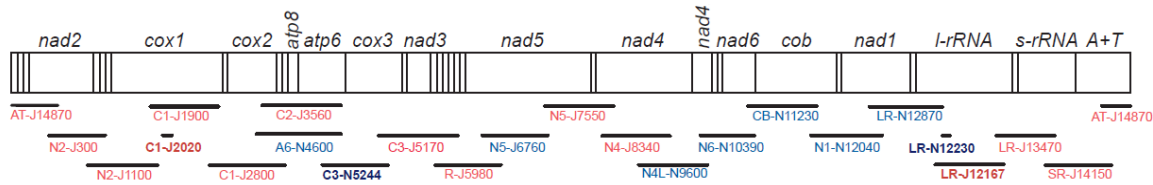


**Appendix I. Primers used for sequencing of the mt genome of *E. superstes*.** Red and blue colors refer to forward and reverse primers, respectively. Names in bold indicate the primers for long PCRs.



Primer	Nucleotide sequence 5' - 3'	Reference
AT-J14870	TAAATATATGTTTATATACCCGTATAC	This study
N2-J300	TTCATCTACTACATGAATTGGAGC	This study
N2-J1100	TCTACGAATTATATTCAGATCTTTTACTTTC	This study
C1-J1900	ACACTTAGCAGGTGTATCTTCTATTCTC	This study
C1-J2020	AATACHTCMTTCTTTGATCCWGCHGGDGGDGGDGACCC	Yamauchi <i>et al.</i> 2005
C1-J2800	TCAGACTGCCCAGATGCTTATACTGC	This study
C2-J3560	TGTAATTCATTTATGAACTGTACCATCAC	This study
A6-N4600	ACGGCTGATTCTAATACTAGAAAGTGC	This study
C3-N5244	GTCAATATCAWGCDCDGCCTTCAAATCCWAAGTGGTG	Yamauchi <i>et al.</i> 2005
C3-J5170	AGGWGTAACWGTRACMTGRGCMCACCACAGC	This study
R-J5980	TCAAGAAGTGTTGAGTCAATAATTC	This study
N5-J6760	TCCGACAACAGCCATAAATAACATAC	This study
N5-J7550	AATAAAAAAGACATAATTCCATCTAC	This study
N4-J8340	TCTAACTCAACTTCAAGAAACAATTC	This study
N4L-N9600	AGCCTGGAATTTATTGTTTTGGC	This study
N6-N10390	TGGTTTATTCATTAGTTTATTGGACGC	This study
CB-N11230	AGGAATTGATCGAAGAATTGCGTATGC	This study
N1-N12040	TCTGATTTGCAGTATTTCTTGTG	This study
LR-N12870	AGTTACCTTAGGGATAACAGCGTAATCTTC	This study
N1-J12167	CCTGGCTTACGCCGTCTGAACTCAGATCATG	Yamauchi <i>et al.</i> 2005
LR-N12230	CWTATCGAMGGGWGDGDTTGCACCTCGATGTTG	Yamauchi <i>et al.</i> 2005
LR-J13470	ACTTATACTAATTTAATCATTATTTCTC	This study
SR-J14150	TGTGCATATTTTAGAGCTCTGGTC	This study

## Appendix II. Putative secondary structures for the 22 tRNA genes in *E. superstes's*

mitogenome. Black dots indicate mismatches of base pairs.

